
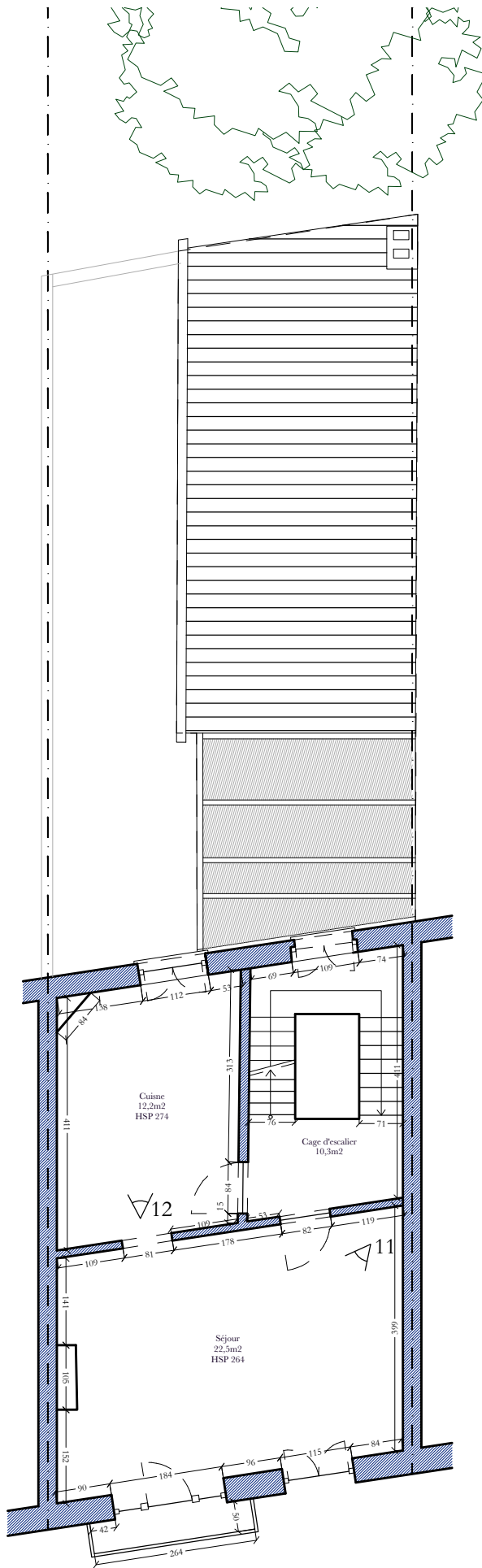



Plan rez

SE01 | 1 : 100 | 

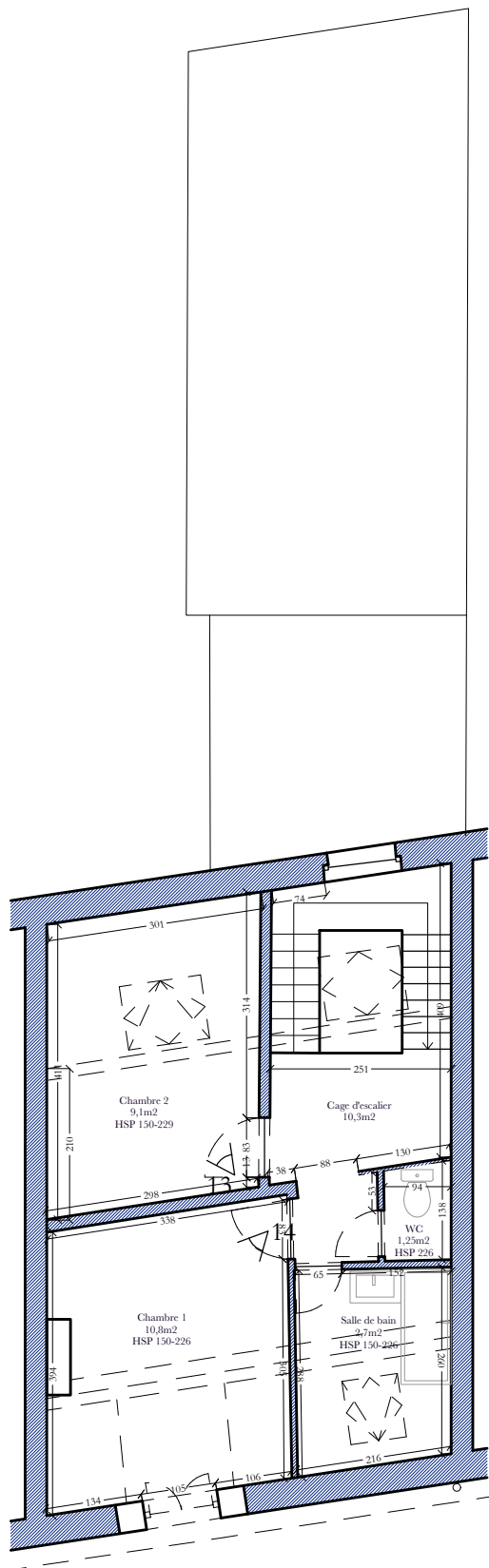
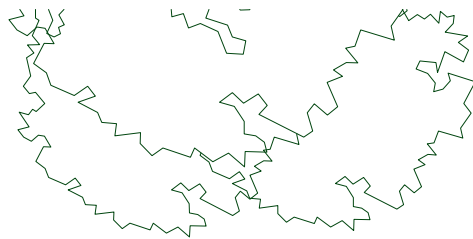
0 1m 2m 5m



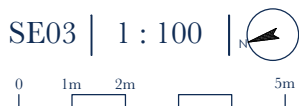
Plan rez+1

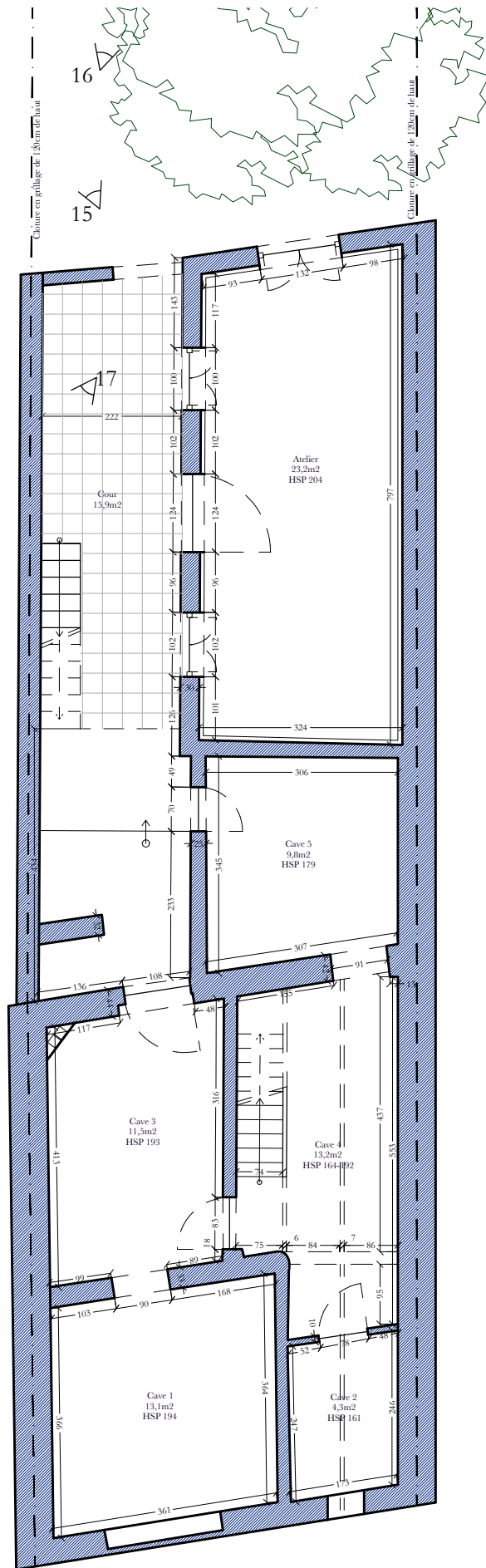
SE02 | 1 : 100 | 

0 1m 2m 5m



Plan rez+2

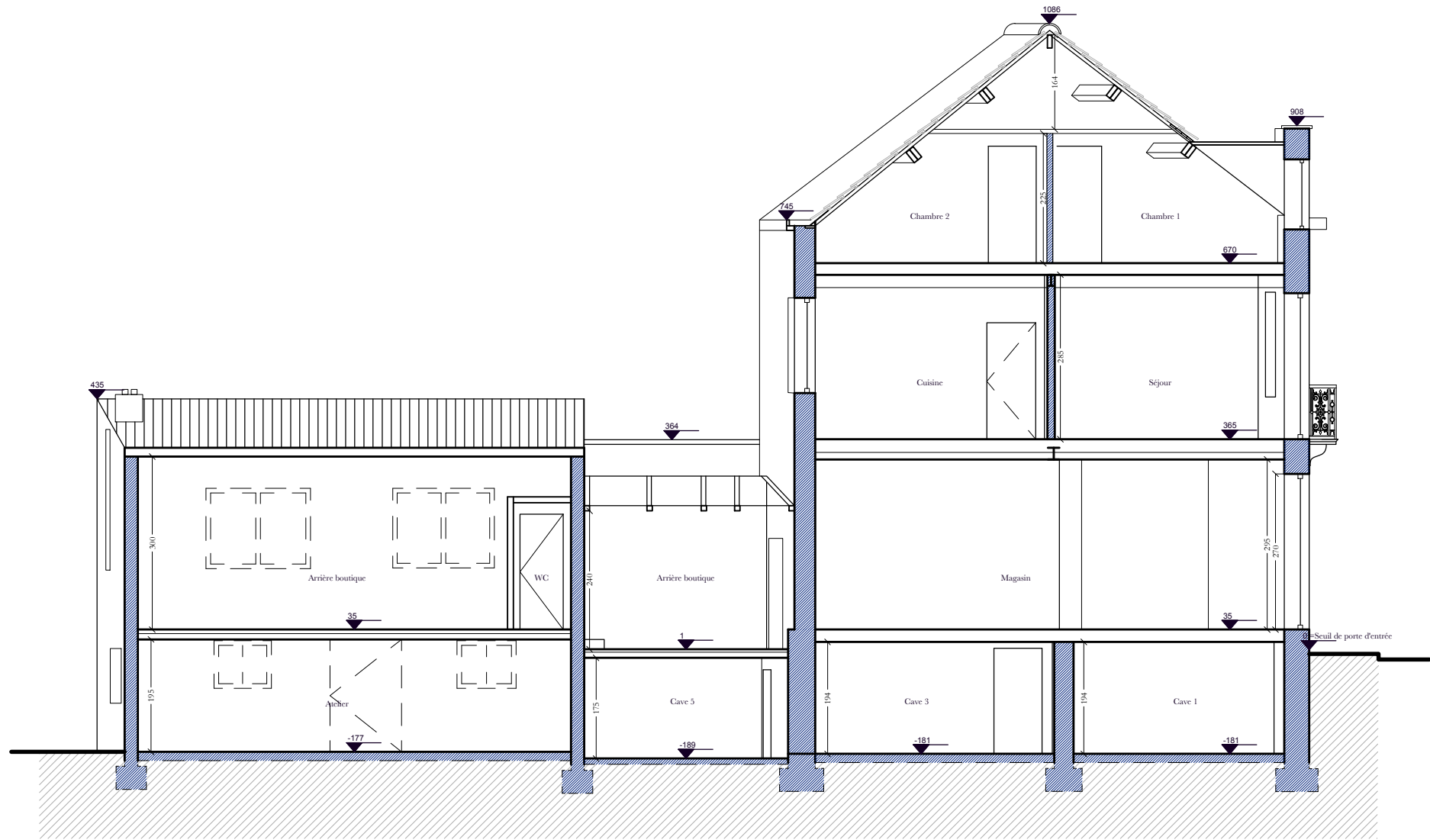






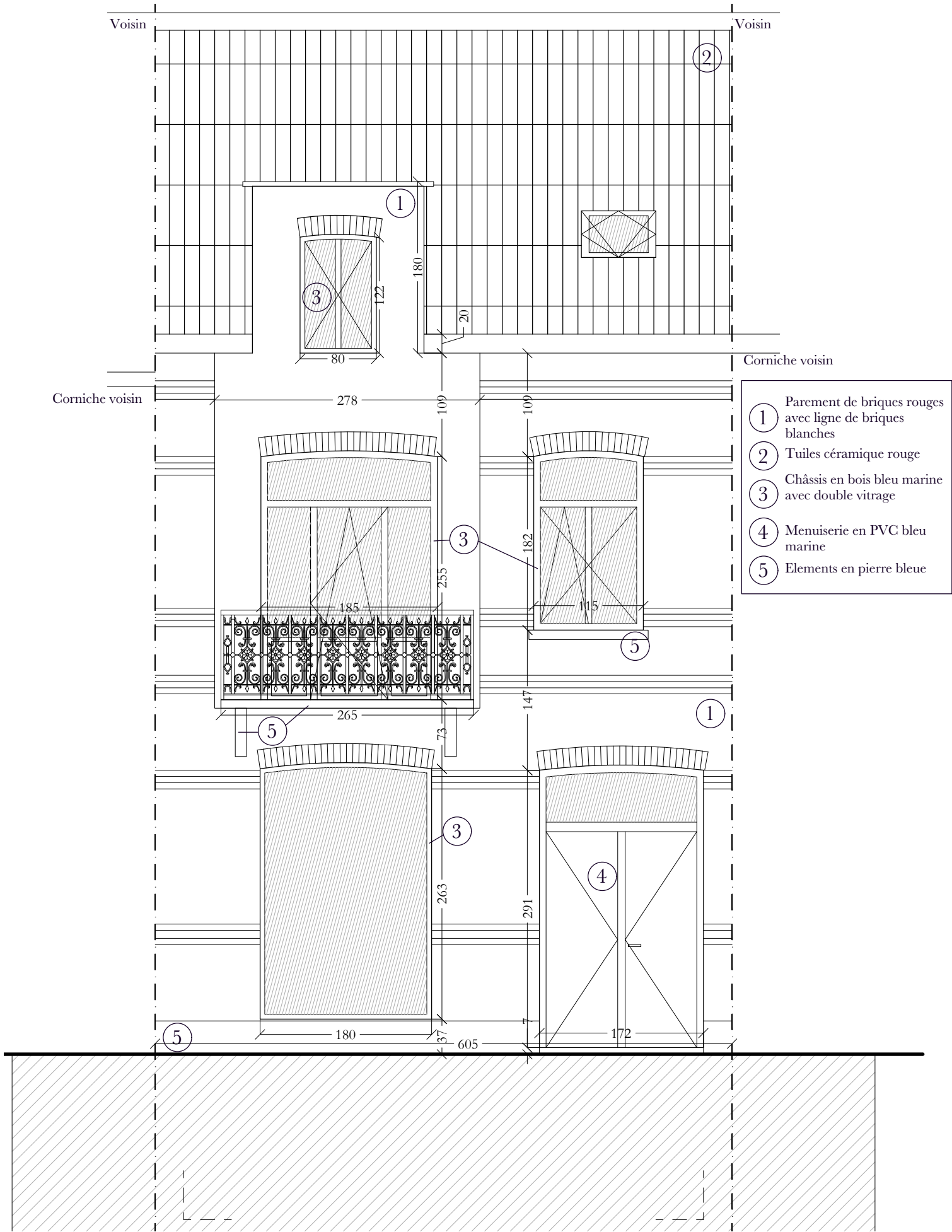
Plan rez-1

SE04 | 1 : 100 | 

0 1m 2m 5m

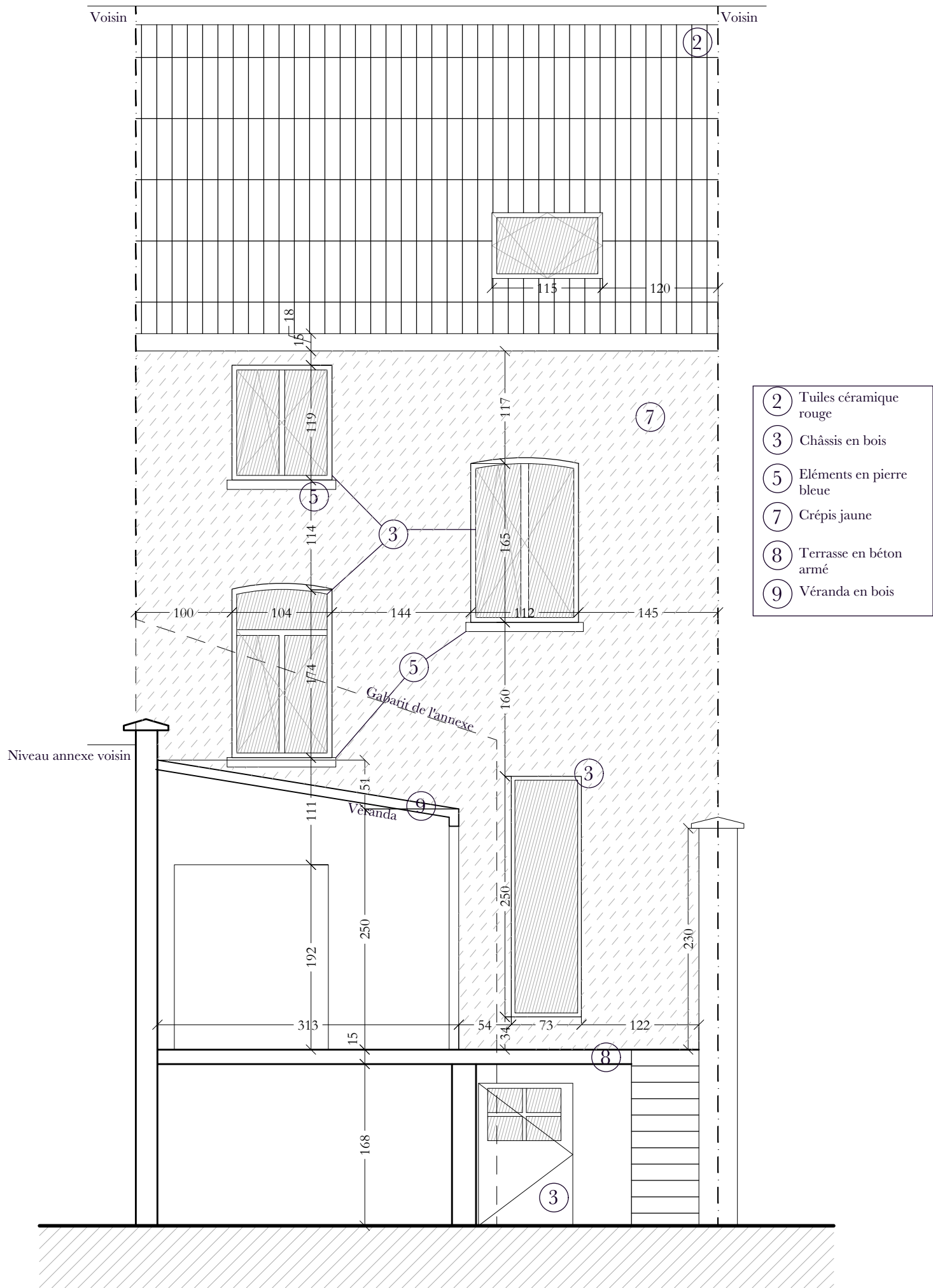


Coupe AA
SE05 | 1 : 100 | 




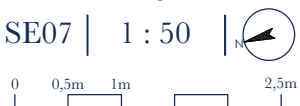
Élévation avant
SE06 | 1 : 50

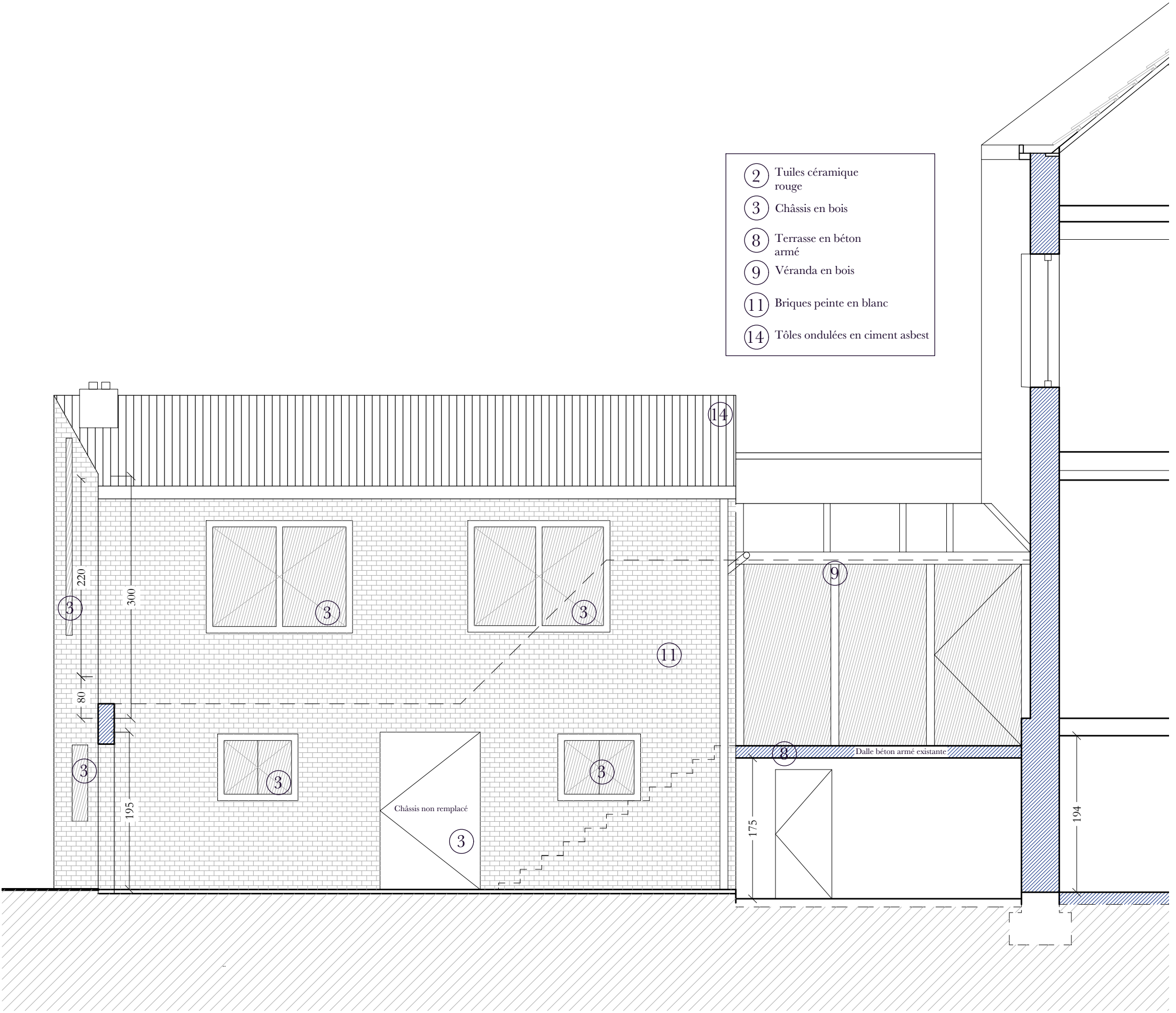
0 0,5m 1m 2,5m



Élévation façade arrière

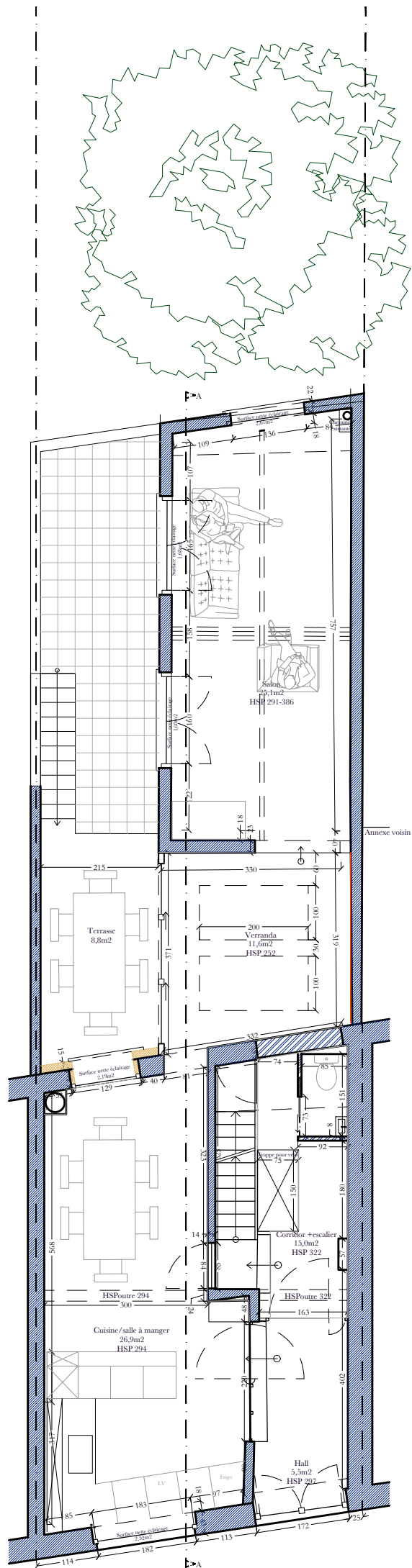
SE07 | 1 : 50 |



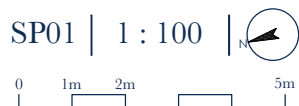


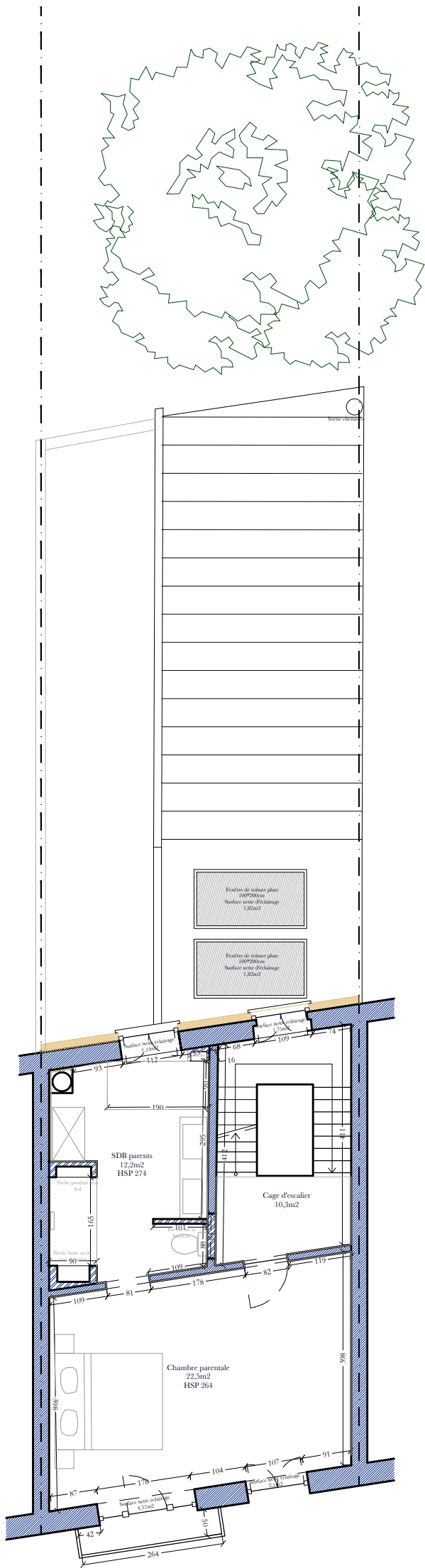
Élévation façade latérale annexe






Plan rez

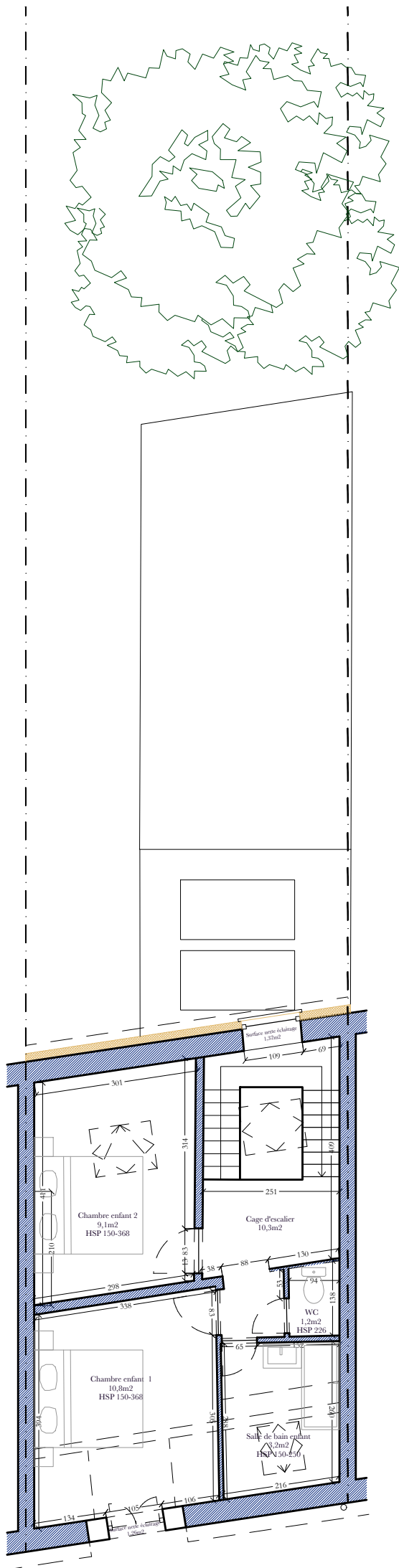





Plan rez+1

SP02 | 1 : 100 | 

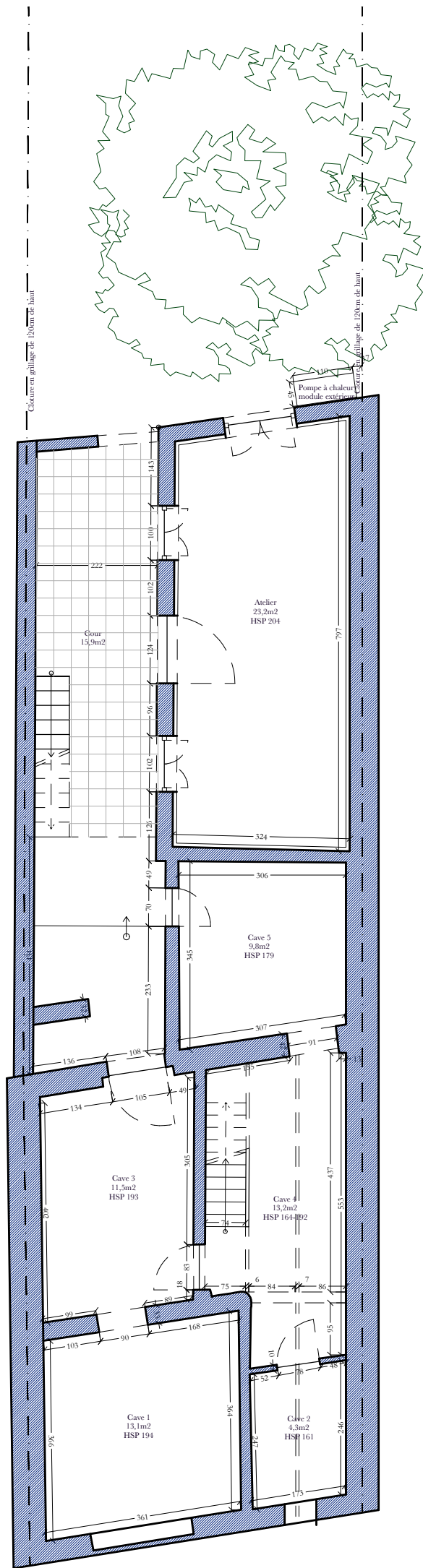
0 1m 2m 5m



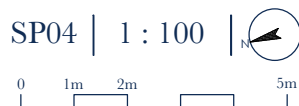
Plan rez+2

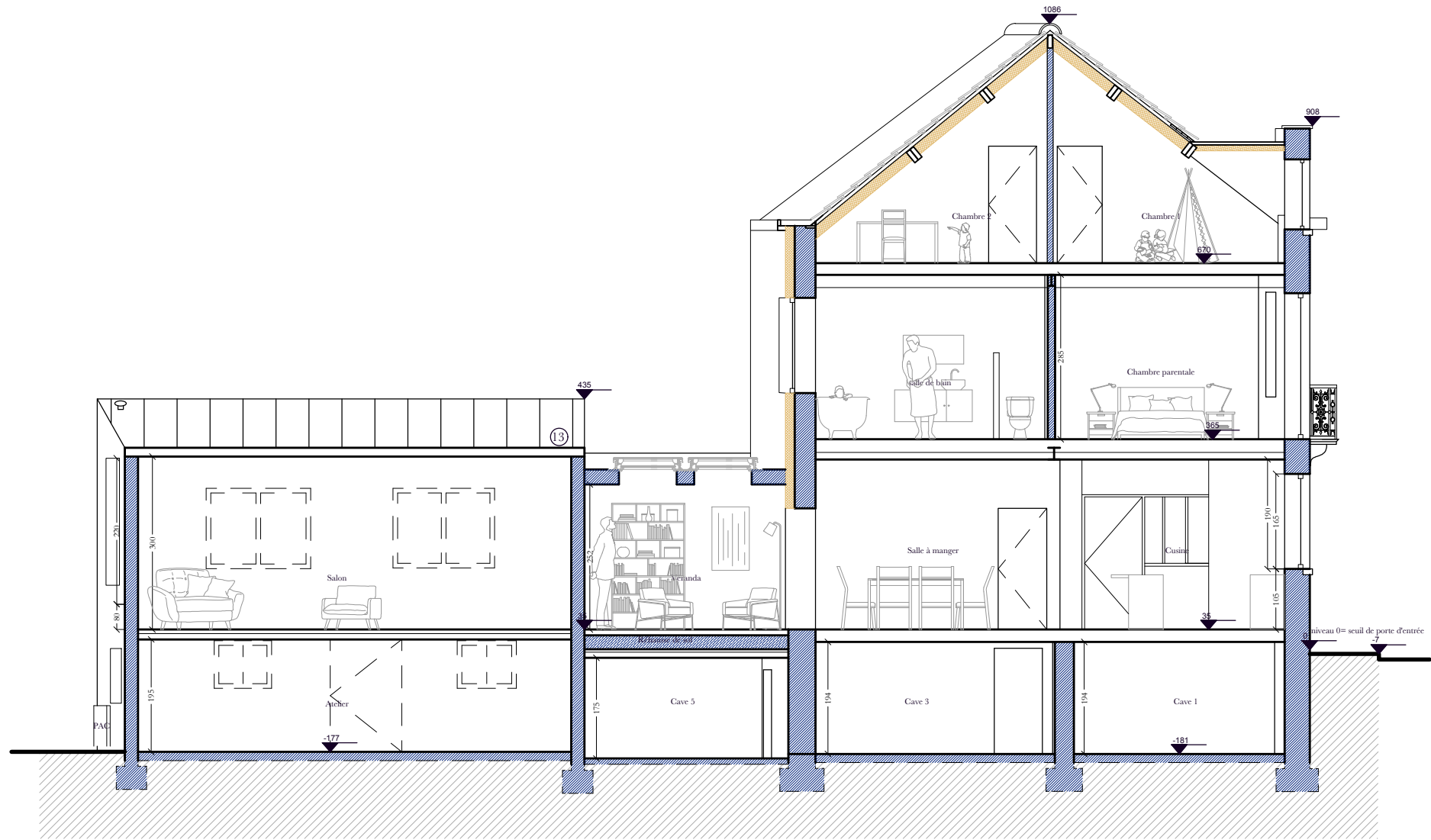
SP03 | 1 : 100 | 

0 1m 2m 5m




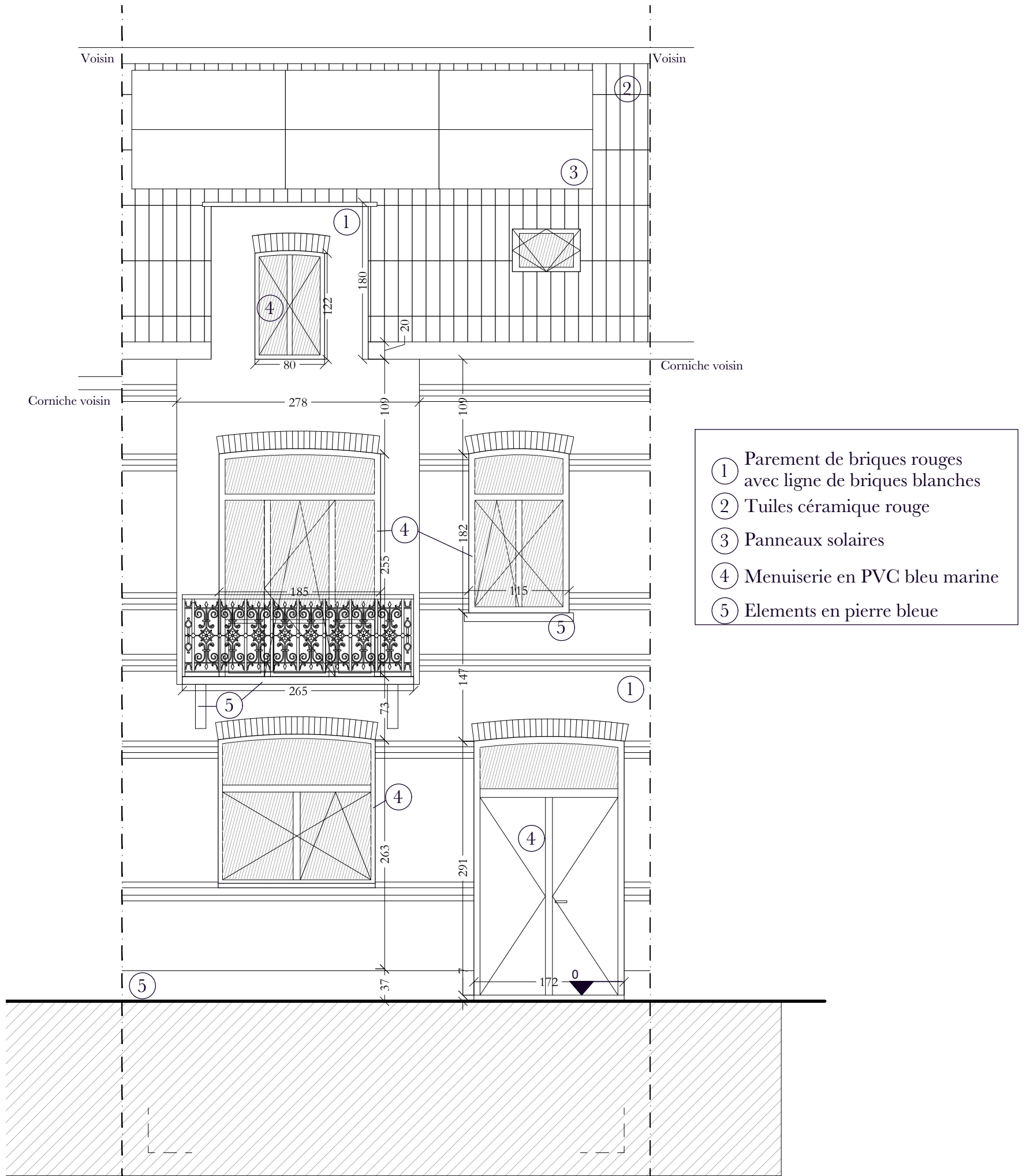
Plan rez-1

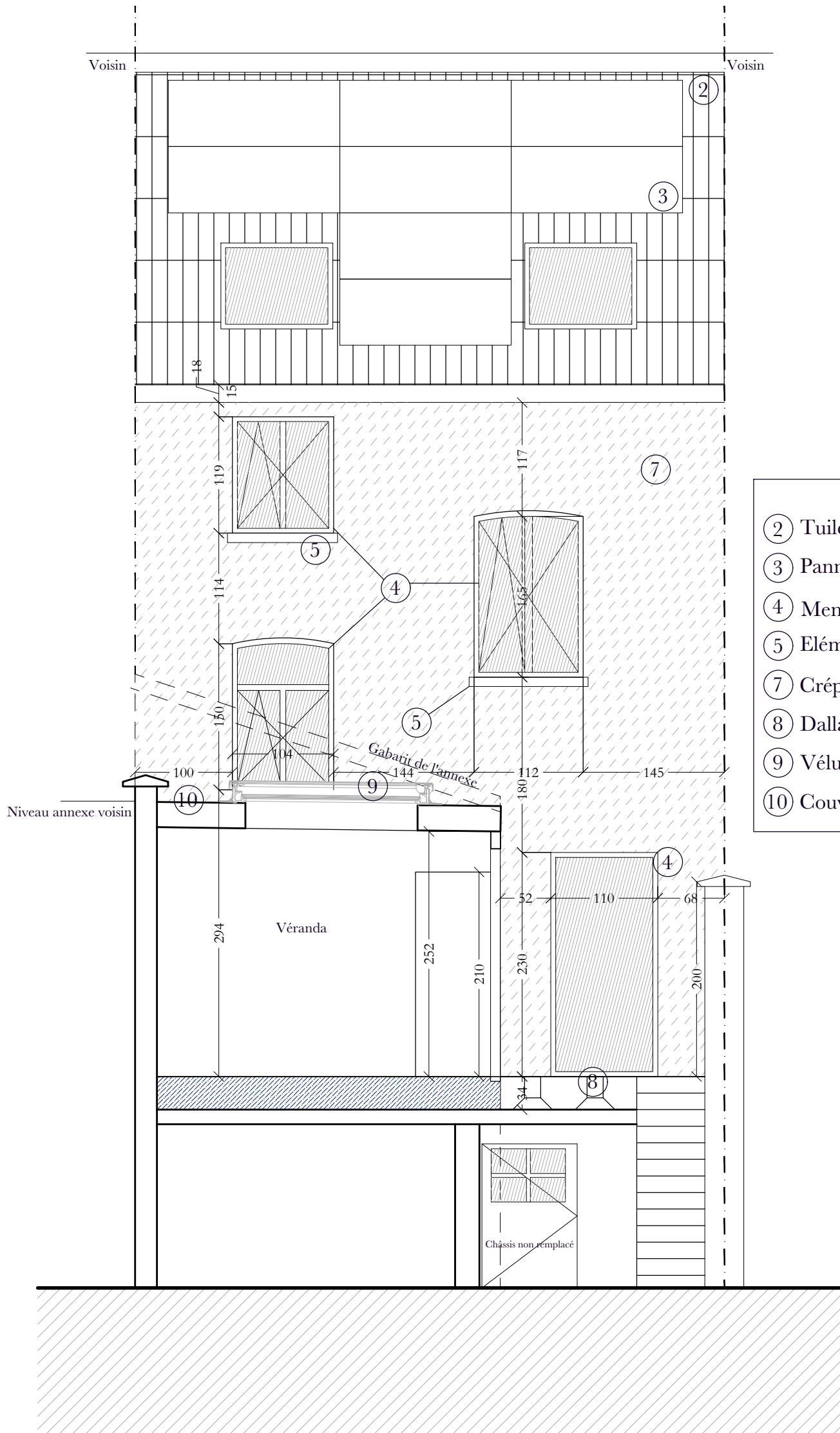




Coupe AA

SP05 | 1 : 100 | 
0 1m 2m 5m





- ② Tuiles céramique rouge
- ③ Panneaux solaires
- ④ Menuiserie en PVC
- ⑤ Eléments en pierre bleue
- ⑦ Crépis sur isolant laine de bois 14cm
- ⑧ Dallage de terrasse sur plots
- ⑨ Vélux pour toit plat
- ⑩ Couverture membrane EPDM

Élévation façade arrière

SP07 | 1 : 50

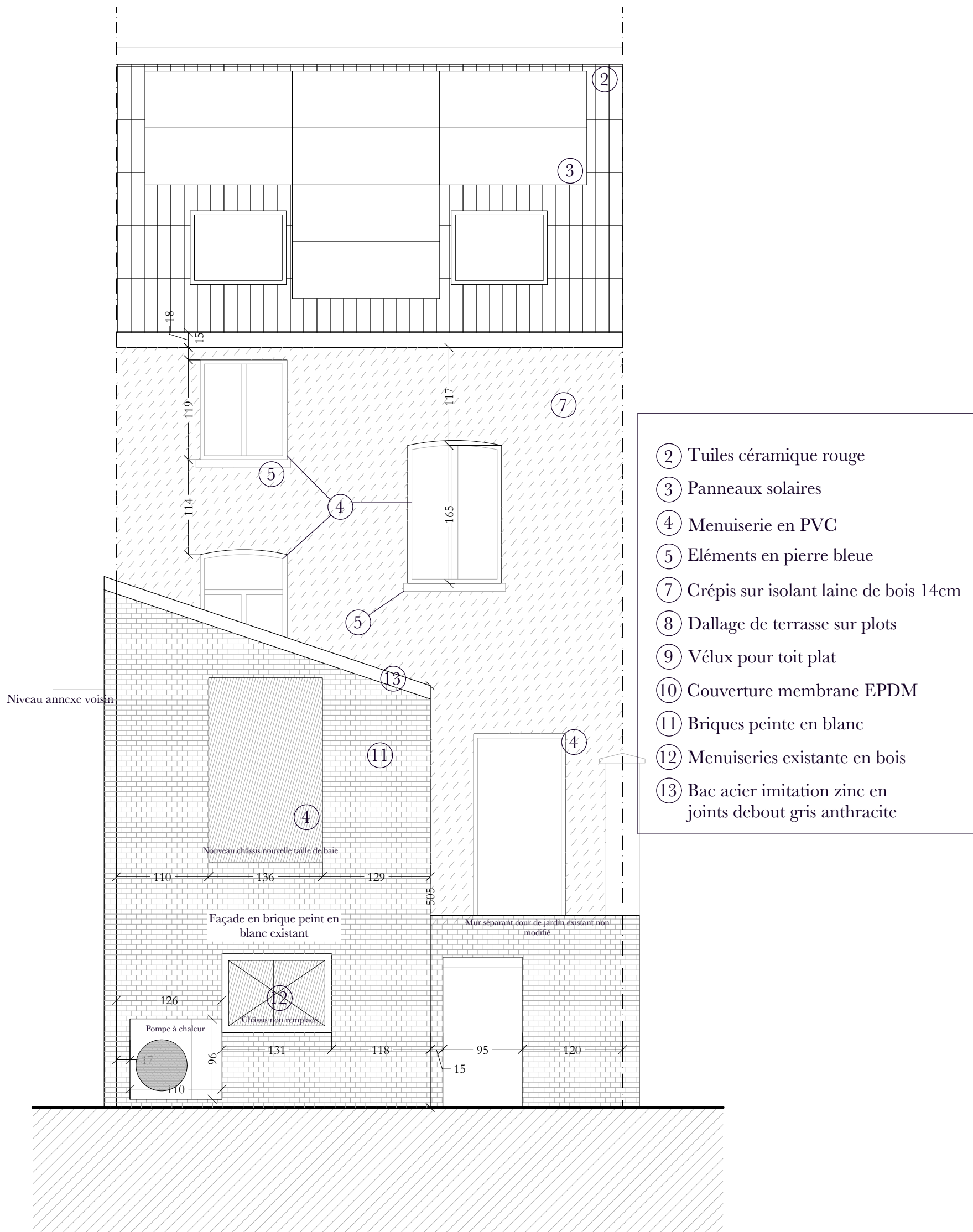


Woluwé-St.-Lambert | Rénovation maison unifamiliale

Rue Saint-Lambert 72, B-1200 Woluwé-Saint-Lambert
Maître d'ouvrage

Avenue G. Rodenbach 75, 1030 Schaerbeek
Tel: 0475/23.66.78 | Tva: 1009.870.265
info@frastudio.com | frastudio.com | 23.12.25

FRA Studio
FRANÇOIS
ROSSIGNOL
STUDIO ARCHITECTURE

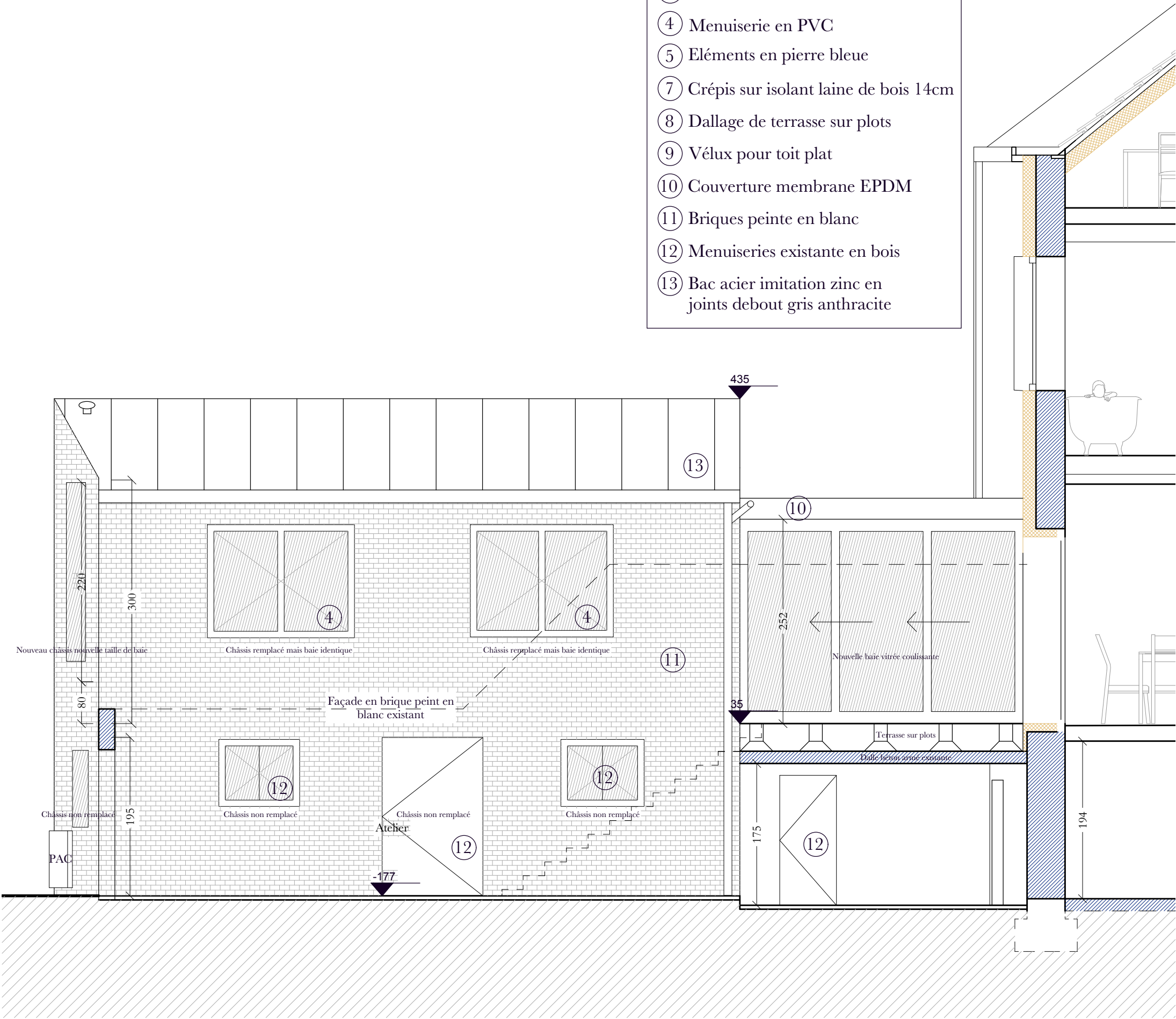


Élévation façade arrière annexe

SP08 | 1 : 50 | 

0 0,5m 1m 2,5m

- ② Tuiles céramique rouge
- ③ Panneaux solaires
- ④ Menuiserie en PVC
- ⑤ Eléments en pierre bleue
- ⑦ Crépis sur isolant laine de bois 14cm
- ⑧ Dallage de terrasse sur plots
- ⑨ Vélux pour toit plat
- ⑩ Couverture membrane EPDM
- ⑪ Briques peintes en blanc
- ⑫ Menuiseries existantes en bois
- ⑬ Bac acier imitation zinc en joints debout gris anthracite



Élévation façade latérale annexe

SP09 | 1 : 50 | 
0 0,5m 1m 2,5m